

# HOUSE SUNFLOWER



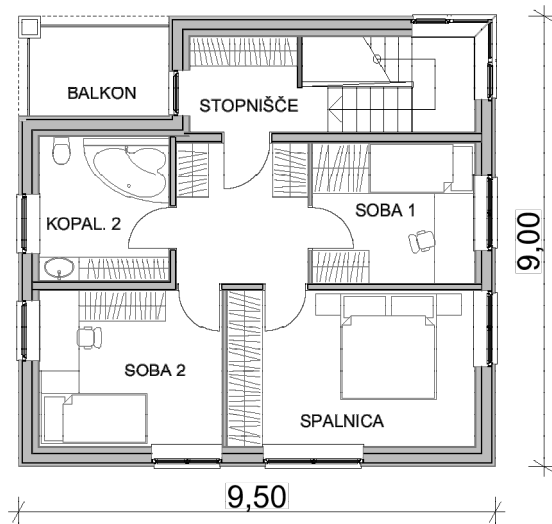
Staircase	10.9 m <sup>2</sup>
Entrance hall 1	6.7 m <sup>2</sup>
Bathroom 1	8.5 m <sup>2</sup>
Cabinet	9.1 m <sup>2</sup>
Living room	26.8 m <sup>2</sup>
Groundfloor NETTO:	62.0 m <sup>2</sup>
Entrance terrace	4.6 m <sup>2</sup>
Lodge	19.7 m <sup>2</sup>



GROUND FLOOR

- SELF-SUFFICIENT HOUSE - FOOD AND ENERGY
- SUSTAINABLE ELEMENTS AND MATERIALS
- HEALTHY FOOD, CLEAN WATER AND AIR
- 30% LOWER COSTS OF LIVING
- PLEASANT AND COMFORTABLE LIVING
- RECREATION IN PICTURESQUE NATURE
- FAMILY OF FOUR (OR FIVE) MEMBERS
- LOCATION: PODKRAJ - SOUTHERN PART OF LJUBLJANA BARJE
- FLAT LAND
- STREAM CLOSE TO HOUSE
- HOUSE ORIENTED TOWARD THE SOUTH

Staircase	8.6 m <sup>2</sup>
Entrance hall 2	7.3 m <sup>2</sup>
Bathroom 2	7.4 m <sup>2</sup>
Room 1	9.1 m <sup>2</sup>
Room 2	11.3 m <sup>2</sup>
Bedroom	15.3 m <sup>2</sup>
1st floor NETTO:	59.0 m <sup>2</sup>
Balkony	4.8 m <sup>2</sup>

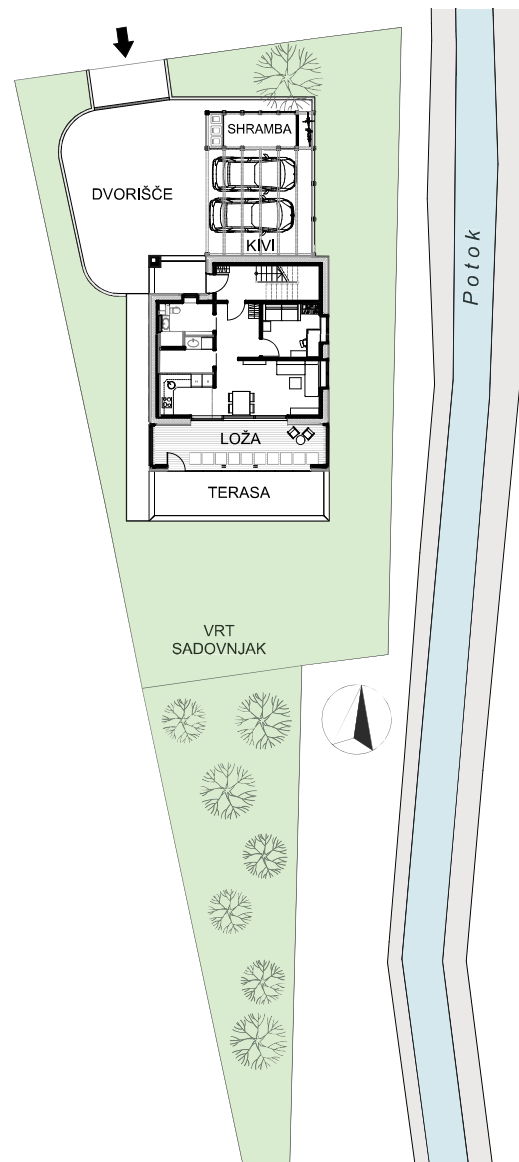


1ST FLOOR



## OFFER TURNKEY HOUSE INCLUDING:

- project documentation: architectural plans, preliminary design, basic design, building permit design;
- geodetic measurements and land surveying plan, different tests and certificates "Suligreen";
- transport to the pre-prepared land and assembling;
- construction including walls, beams, intermediate construction, roof, terrace;
- windows and doors (nearly zero-energy standards), sliding frameless glazing wall at the lodge;
- thin-layer plaster facade / facade panels / wooden facade;
- partition and installation walls and wall covering;
- floor (construction, parquet, ceramics, terrace floorboards in the lodge);
- roof covering with rainwater system, snow guards, eaves, gutter and insulation;
- entrance terrace floor with wooden stairs and entrance canopy;
- wooden terrace (construction with foundation and wooden terrace floorboards);
- exterior design: outside waste location, bicycle-shed, garden sink, pergolas, parking space;
- electrical installation and stationary battery (10kWh);
- mechanical installation with bathroom, kitchen and utility equipment;
- a solar power plant on the roof with a built-in hybrid inverter and a stationary battery for reliable self-supply of electricity for all the needs of the house and one electric vehicle;
- electric car charger;
- automatic regulation of heating and cooling with heat recovery ventilation system;
- water filtration system;
- underground rainwater storage tank (5m<sup>3</sup> per person) with automatic irrigation system;
- Eco Fund Slovenia offers subsidies to various investments in zero-energy residential buildings;



SULIGREEN, zadruga za trajnostno prebivanje z.o.o., Co-operative for Sustainable Living LLC.

ADDRESS: Kraška 12, 1000 Ljubljana

REGISTRATION Nr: 8244502000, TAX Nr: 80937608

The president prof. dr. Gojko Stanič

MOBILE: +00386 31/619-487

PHONE: +00386 1/429-37-15

INTERNET PAGES: [www.suligreen.com](http://www.suligreen.com)

E-mail: [info@suligreen.com](mailto:info@suligreen.com)

